

The Economics of Women's Rights

Results from extended dataset

Michèle Tertilt

University of Mannheim, Germany

Matthias Doepke

Northwestern University, USA and
London School of Economics, UK

Anne Hannusch

University of Mannheim, Germany

Laura Montenbruck

University of Mannheim, Germany

February 2023

In these notes we explain several improvements we made to the data set after the paper was already published. Rerunning the regressions on the improved data set gives essentially the same results. Almost all coefficients remain similar in magnitudes (changes appear mostly after the decimal point) and in significance. There are a few exceptions to this, but those concern largely auxiliary results rather than the main regressions. In sum, the main finding of the paper, namely that economic forces can account for much of the cross-country variation in all four women's rights indicators, remains unchanged. In this note we explain in detail how and why the extended data is different, and which results change.

1. Changes in Results as Compared to the JEEA Paper

We highlight detailed changes of the extended data set compared to the data set used in the published version of the JEEA paper in blue below each table and figure.

In sum, the extended data set contains a larger sample, yet the interpretation of the main regressions and the robustness checks remain unchanged. However, we find that the results for the regressions with additional factors slightly change due to seven adjustments to the extended data set:

1. We improved the matching of countries by name further when merging the different data sets (see do-file 1_Data_preparation.do).
2. We updated the female suffrage subindicator that is part of the political rights index. Due to the update, data during the first half of the sample is now available for a set of countries that previously had missing observations for female suffrage. This particularly concerns countries that were part of unions that dissolved over the sample period, such as USSR or Yugoslavia.
3. We interpolated religious majorities until 2019, which means that regressions controlling for religious majorities now also include data up to 2019. Previously, regressions with controls for religious majorities were limited to data until 2013.
4. We extended the dummy variable for the year a country gains independence over the entire sample from 1971-2021 for all countries in the data set.
5. We updated the body rights index. The two subindices for abortion rights are now also available for the years 2010, 2012, 2014 and 2016 and thus data for these years are also considered in the regressions and figures.
6. In addition, an error in the coding of the contraceptive prevalence subindex was corrected, which also altered the body rights index.
7. We used an updated measure for the Quality of Government from the QoD dataset in our regressions of factors specific to individual laws (1_Data_preparation.do for the updated source).

2. Figures and Tables in Main Text using the updated dataset

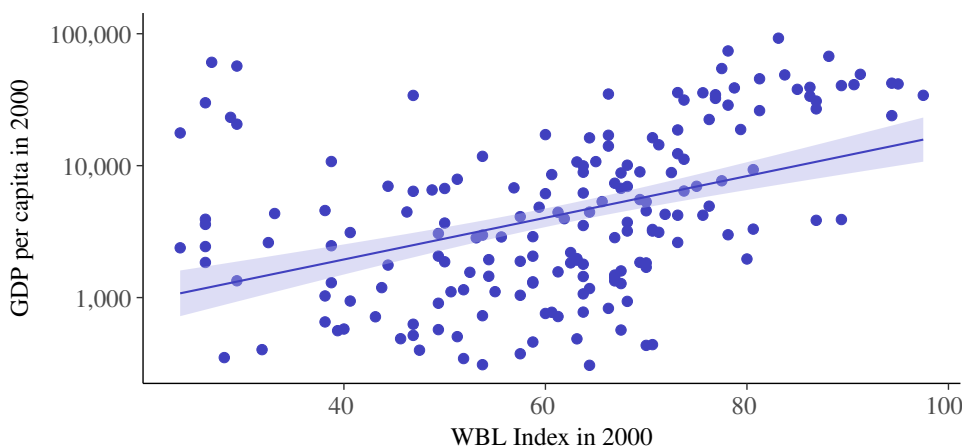


FIGURE 1. Women's Rights and Economic Development across Countries

No changes.

TABLE 1. Examples of Women's Rights by Income

Right to ...	% of Countries by Income		
	All	Low	High
...be elected	94.6	96.2	88.9
...sign a contract in the same ways as a man	95.8	88.5	100
...obtain a passport in the same ways as a man	75.3	69.2	82.5
...work night shift the same way as a man	68.9	61.5	80.7
...work in an industrial job the same way as a man	41.1	23.1	45.6
...legal protection against domestic violence	24.2	0	45.6

Summary of Changes: The fraction of low income countries that have the right to be elected drops from previously 100% to 96.2% due to small improvements in the matching of countries by name when the different data sets are merged. In addition, the average of all countries drops from 96.7% to 94.6%.

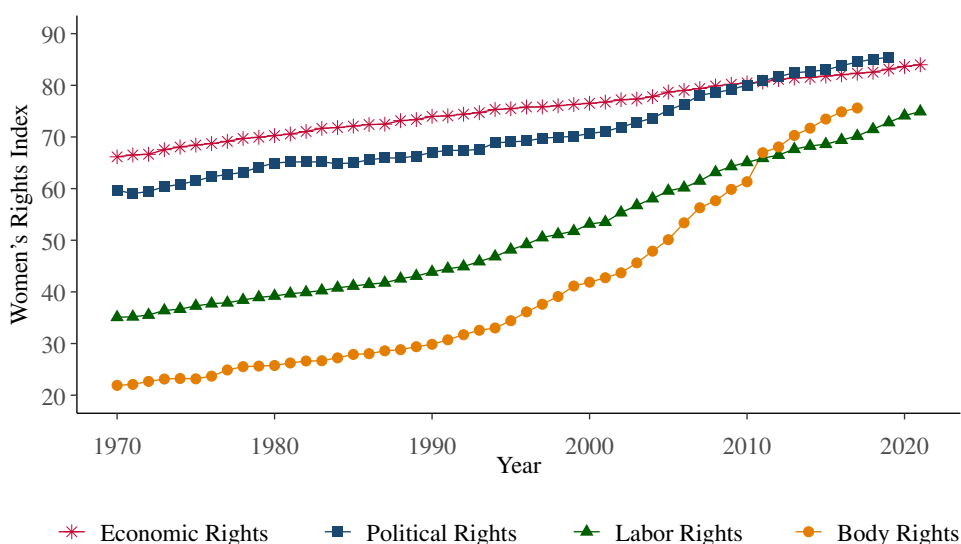


FIGURE 3. Worldwide Increase in Four Women's Rights Indices

Summary of Changes: We now have observations for body rights in 2010, 2012, 2014 and 2016 since we interpolate abortion rights in these years. Due to a correction in the coding of our contraceptive prevalence indicator, body rights are less prevalent than labor rights, especially during the first half of the sample. The body rights index is 22 and the labor rights index 35 in 1971. Both body and labor rights gradually increase over the entire time period, reaching close to 75 points by 2017 and 2021, respectively. The body rights index surpasses the labor rights index in 2010. The indicators for economic, political and labor rights remain unchanged.

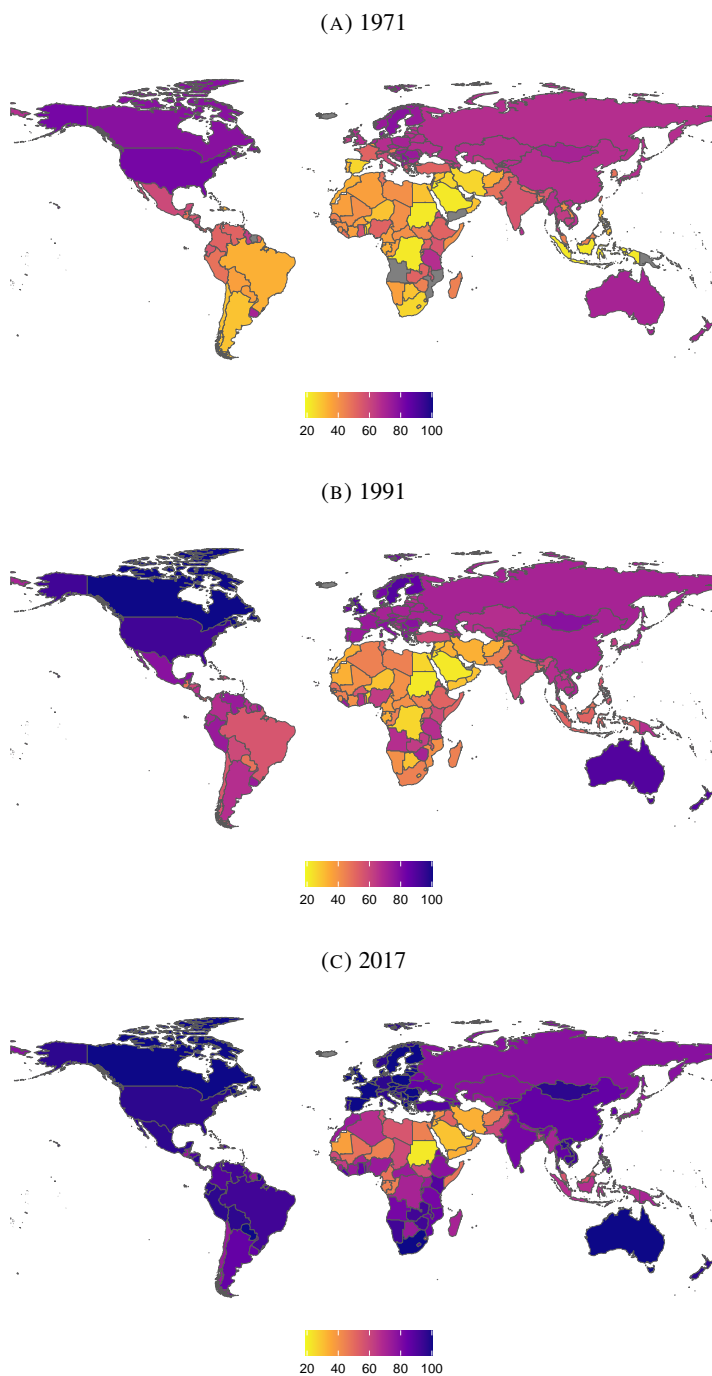


FIGURE 4. The Development of Women's Rights Across the World

Summary of Changes: The world maps now feature data for countries that were previously missing. This particularly concerns countries that belonged to unions that dissolved during the sample period, i.e. UdSSR and Yugoslavia. A re-coding of the female suffrage variable allowed us to replace many missing observations during earlier parts of the sample.

TABLE 3. Economic Rights – Summary of Regression Results

	Dependent Variable: Economic Rights Index				
	(1)	(2)	(3)	(4)	(5)
A. Economic Variables					
GDP p.c. (in 1000s)	0.33***	−0.15**	0.02	−0.17**	−0.02
Fertility rate, total (births per woman)		−7.20***	−1.84***	−6.72***	−6.55***
Female LFP (15-64)		0.51***	0.13***	0.45***	0.42***
B. Interactions with Religion					
Majority Catholic × GDP p.c.					0.06
Majority Muslim=1 × GDP p.c. (in 1000s)					−0.81***
Majority Buddhist=1 × GDP p.c. (in 1000s)					−0.30
Time FEs	No	No	Yes	Yes	Yes
Country FEs	No	No	Yes	No	No
Religion FEs	No	No	No	Yes	Yes
Observations	8251	5730	5730	4903	4903
Adjusted R^2	0.060	0.511	0.911	0.547	0.596

Summary of Changes: No significant changes. The sample is larger.

TABLE 4. Political Rights – Summary of Regression Results

	Dependent Variable: Political Rights Index				
	(1)	(2)	(3)	(4)	(5)
A. Economic Variables					
GDP p.c. (in 1000s)	0.10	−0.06	−0.03	−0.09	0.16*
Fertility rate, total (births per woman)		−2.35***	−1.18***	−1.91**	−1.73**
Female LFP (15-64)		0.35***	0.39***	0.32***	0.29***
B. Interactions with Religion					
Majority Catholic × GDP p.c.					−0.23*
Majority Muslim=1 × GDP p.c. (in 1000s)					−1.15***
Majority Buddhist=1 × GDP p.c. (in 1000s)					−0.50**
Time FEs	No	No	Yes	Yes	Yes
Country FEs	No	No	Yes	No	No
Religion FEs	No	No	No	Yes	Yes
Observations	7605	5439	5439	4757	4757
Adjusted R^2	0.008	0.140	0.747	0.226	0.335

Summary of Changes: The sample is larger, leading to small changes in coefficients after the decimal point. Qualitatively, the results did not change, except that the coefficient for the interaction term between catholic majorities and GDP p.c. is now negative and marginally significant.

TABLE 5. Labor Rights – Summary of Regression Results

	Dependent Variable: Labor Rights Index				
	(1)	(2)	(3)	(4)	(5)
A. Economic Variables					
GDP p.c. (in 1000s)	0.63***	0.28***	−0.29***	0.29**	0.58***
Fertility rate, total (births per woman)		−4.74***	2.46***	−2.77***	−2.62***
Female LFP (15-64)		0.49***	0.10**	0.32***	0.29***
B. Interactions with Religion					
Majority Catholic × GDP p.c.					−0.30
Majority Muslim=1 × GDP p.c. (in 1000s)					−1.24***
Majority Buddhist=1 × GDP p.c. (in 1000s)					−0.77***
Time FEs	No	No	Yes	Yes	Yes
Country FEs	No	No	Yes	No	No
Religion FEs	No	No	No	Yes	Yes
Observations	8251	5730	5730	4903	4903
Adjusted R^2	0.126	0.294	0.823	0.407	0.467

Summary of Changes: The sample is larger, leading to small changes in coefficients after the decimal point. Coefficients remain essentially the same in magnitude and significance except that the coefficient on female LFP in column (3) is now significant.

TABLE 6. Rights over Own Body – Summary of Regression Results

	Dependent Variable: Body Rights Index				
	(1)	(2)	(3)	(4)	(5)
A. Economic Variables					
GDP p.c. (in 1000s)	0.81***	0.09	0.17**	0.17*	0.33***
Fertility rate, total (births per woman)		−9.97***	−0.78	−7.88***	−7.68***
Female LFP (15-64)		0.35***	0.07	0.19**	0.16**
B. Interactions with Religion					
Majority Catholic × GDP p.c.					−0.04
Majority Muslim=1 × GDP p.c. (in 1000s)					−0.75***
Majority Buddhist=1 × GDP p.c. (in 1000s)					−0.25
Time FEs	No	No	Yes	Yes	Yes
Country FEs	No	No	Yes	No	No
Religion FEs	No	No	No	Yes	Yes
Observations	6383	4609	4609	4121	4121
Adjusted R^2	0.142	0.401	0.826	0.566	0.587

Summary of Changes: The sample is larger. Note that the coefficient on GDP p.c. in column (2) is now insignificant. In addition, the estimated coefficient on the total fertility rate in column (2) is -9.97 (instead of -5.82), meaning that the total fertility rate and body rights are linked more strongly than any other rights index. In addition, the association with FLFP is lower for the body rights index than for economic and labor rights and it is as low as for political rights (also column (2)). When comparing columns (2) and (4), we see that the adjusted R^2 increases by 40% (instead of 60%). This effect is still mainly driven by time fixed effects.

5.5. Summary and Interpretation of Empirical Findings

Summary of Changes: In terms of magnitudes, the economic channels explain the largest share of the variation in the data for the case of economic rights (with an R^2 of 0.51), followed by body rights (0.40), then labor rights (0.29), with political rights last (0.14). [*JEEA version: explained variation was larger for labor rights (0.30) than for body rights (0.27).*]

Second, the total fertility rate is also significantly negatively related to all types of women's rights, implying that parental altruism may be another important channel underlying the expansion of women's rights. This channel seems most important for body rights, with an estimated coefficient of around -10 in column (2) of Table 6, closely followed by economic rights and labor rights with coefficients of about -7 and -5, respectively. The quantitative effect is smallest for political rights, with a coefficient of roughly -2.35. [*JEEA version: the parental altruism channel seemed most important for economic rights, followed by body and labor, and lastly political rights.*]

5.6. Robustness Checks

Summary of Changes: The OPEC indicator is now also insignificant for all rights indices, including the economic rights indicator.

5.7. Factors Specific to Individual Laws

TABLE 7. Additional Factors Correlated with Women's Rights

Factor/Rights	Economic	Political	Labor	Own Body
Female Population Share			+	
Employment Share Agriculture		+		
Government Effectiveness				+
Membership in Int. Women NGOs		+		+
Nb. of Conventions Ratified	+	+		+
International Pressure	+	+	+	+
Women in Parliament > 20%	+	n/a	+	+

Summary of Changes: All regression results underlying this summary table can be found in Tables B.7 –B.10 and have a larger sample than in the published JEEA version. '+' indicates a positive and significant coefficient that is unchanged across data sets. '+' indicates a coefficient that was positive and significant in the JEEA data set, but is no longer significant in the extended data set. '+' indicates a coefficient that was insignificant in the JEEA data set, but is positive and significant in the extended data set.

Appendix A: Replication of Figures and Tables in Appendix

TABLE A.3. Economic Rights

	Dependent Variable: Economic Rights Index					
	(1)	(2)	(3)	(4)	(5)	(6)
A. Economic Variables						
GDP p.c. (in 1000s)	0.33*** (0.10)	-0.15** (0.07)	0.02 (0.03)	-0.17** (0.07)	-0.02 (0.05)	
Fertility rate, total (births per woman)		-7.20*** (0.55)	-1.84*** (0.28)	-6.72*** (0.67)	-6.55*** (0.67)	
Female LFP (15-64)		0.51*** (0.06)	0.13*** (0.03)	0.45*** (0.08)	0.42*** (0.08)	
Majority Catholic=1				0.56 (2.09)	0.08 (2.88)	0.43 (2.89)
Majority Muslim=1				-9.47** (3.90)	-3.91 (3.84)	-23.09*** (3.46)
Majority Buddhist=1				-0.48 (3.97)	2.45 (4.96)	5.91* (3.16)
B. Interactions with Religion						
Majority Catholic \times GDP p.c.					0.06 (0.09)	
Majority Muslim=1 \times GDP p.c. (in 1000s)					-0.81*** (0.12)	
Majority Buddhist=1 \times GDP p.c. (in 1000s)					-0.30 (0.19)	
Time FEs	No	No	Yes	Yes	Yes	Yes
Country FEs	No	No	Yes	No	No	No
Observations	8251	5730	5730	4903	4903	7432
Adjusted R^2	0.060	0.511	0.911	0.547	0.596	0.335

Summary of Changes: See Table 3.

TABLE A.4. Political Rights

	Dependent Variable: Political Rights Index					
	(1)	(2)	(3)	(4)	(5)	(6)
A. Economic Variables						
GDP p.c. (in 1000s)	0.10 (0.12)	-0.06 (0.11)	-0.03 (0.06)	-0.09 (0.12)	0.16* (0.08)	
Fertility rate, total (births per woman)		-2.35*** (0.63)	-1.18*** (0.42)	-1.91** (0.77)	-1.73** (0.72)	
Female LFP (15-64)		0.35*** (0.07)	0.39*** (0.04)	0.32*** (0.10)	0.29*** (0.10)	
Majority Catholic=1				2.79 (2.45)	5.84** (2.92)	1.50 (2.41)
Majority Muslim=1				-0.72 (4.00)	7.51* (3.92)	-9.78*** (3.75)
Majority Buddhist=1				-7.74* (4.02)	-2.77 (4.92)	-4.88 (4.12)
B. Interactions with Religion						
Majority Catholic \times GDP p.c.					-0.23* (0.13)	
Majority Muslim=1 \times GDP p.c. (in 1000s)					-1.15*** (0.22)	
Majority Buddhist=1 \times GDP p.c. (in 1000s)					-0.50** (0.20)	
Time FEs	No	No	Yes	Yes	Yes	Yes
Country FEs	No	No	Yes	No	No	No
Observations	7605	5439	5439	4757	4757	7001
Adjusted R^2	0.008	0.140	0.747	0.226	0.335	0.195

Summary of Changes: See Table 4.

TABLE A.5. Labor Rights

	Dependent Variable: Labor Rights Index					
	(1)	(2)	(3)	(4)	(5)	(6)
A. Economic Variables						
GDP p.c. (in 1000s)	0.63*** (0.13)	0.28*** (0.10)	-0.29*** (0.06)	0.29** (0.12)	0.58*** (0.10)	
Fertility rate, total (births per woman)		-4.74*** (0.83)	2.46*** (0.45)	-2.77*** (0.99)	-2.62*** (0.96)	
Female LFP (15-64)		0.49*** (0.08)	0.10** (0.04)	0.32*** (0.10)	0.29*** (0.10)	
Majority Catholic=1				7.44** (3.50)	11.38** (4.66)	4.96 (3.78)
Majority Muslim=1				-14.82*** (4.98)	-5.62 (4.76)	-22.06*** (4.14)
Majority Buddhist=1				-6.49 (4.77)	0.40 (5.29)	-4.42 (5.30)
B. Interactions with Religion						
Majority Catholic \times GDP p.c.					-0.30 (0.22)	
Majority Muslim=1 \times GDP p.c. (in 1000s)					-1.24*** (0.22)	
Majority Buddhist=1 \times GDP p.c. (in 1000s)					-0.77*** (0.21)	
Time FEs	No	No	Yes	Yes	Yes	Yes
Country FEs	No	No	Yes	No	No	No
Observations	8251	5730	5730	4903	4903	7432
Adjusted R^2	0.126	0.294	0.823	0.407	0.467	0.342

Summary of Changes: See Table 5.

TABLE A.6. Body Rights

	Dependent Variable: Body Rights Index					
	(1)	(2)	(3)	(4)	(5)	(6)
A. Economic Variables						
GDP p.c. (in 1000s)	0.81*** (0.17)	0.09 (0.09)	0.17** (0.07)	0.17* (0.10)	0.33*** (0.10)	
Fertility rate, total (births per woman)		-9.97*** (0.69)	-0.78 (0.61)	-7.88*** (0.79)	-7.68*** (0.77)	
Female LFP (15-64)		0.35*** (0.07)	0.07 (0.05)	0.19** (0.08)	0.16** (0.08)	
Majority Catholic=1				4.67 (2.84)	5.45 (3.70)	6.31 (4.08)
Majority Muslim=1				-3.52 (3.95)	1.80 (3.92)	-13.24*** (3.88)
Majority Buddhist=1				-4.28 (5.17)	-1.42 (6.72)	1.56 (5.45)
B. Interactions with Religion						
Majority Catholic \times GDP p.c.					-0.04 (0.15)	
Majority Muslim=1 \times GDP p.c. (in 1000s)					-0.75*** (0.12)	
Majority Buddhist=1 \times GDP p.c. (in 1000s)					-0.25 (0.29)	
Time FEs	No	No	Yes	Yes	Yes	Yes
Country FEs	No	No	Yes	No	No	No
Observations	6383	4609	4609	4121	4121	5955
Adjusted R^2	0.142	0.401	0.826	0.566	0.587	0.434

Summary of Changes: See Table 6.

A.5. Graphical Illustration of Time Fixed Effects



FIGURE A.1. Time Fixed Effects by Rights Index

Appendix B: Replication of Figures and Tables in the Online Appendix**B.2. Religious Majorities by Country**

TABLE B.2. Religious Majorities by Country in 2000

Country	Catholic	Muslim	Buddhist	Country	Catholic	Muslim	Buddhist
Afghanistan		X		Lesotho			
Albania		X		Liberia			
Algeria		X		Libya		X	
Angola				Lithuania	X		
Antigua and Barbuda	mis.	mis.	mis.	Luxembourg	mis.	mis.	mis.
Argentina	X			Madagascar			
Armenia				Malawi			
Australia				Malaysia		X	
Austria	X			Maldives	mis.	mis.	mis.
Azerbaijan		X		Mali		X	
Bahamas, The	mis.	mis.	mis.	Malta	mis.	mis.	mis.
Bahrain		X		Marshall Islands	mis.	mis.	mis.
Bangladesh		X		Mauritania		X	
Barbados	mis.	mis.	mis.	Mauritius			X
Belarus				Mexico	X		
Belgium	X			Micronesia, Fed. Sts.	mis.	mis.	mis.
Belize	mis.	mis.	mis.	Moldova			
Benin				Mongolia			
Bhutan			X	Montenegro	mis.	mis.	mis.
Bolivia	X			Morocco		X	
Bosnia and Herzegovina				Mozambique			
Botswana				Myanmar			X
Brazil	X			Namibia			X
Brunei Darussalam	mis.	mis.	mis.	Nepal			X
Bulgaria				Netherlands			
Burkina Faso		X		New Zealand			
Burundi	X			Nicaragua	X		
Cabo Verde	X			Niger		X	
Cambodia			X	Nigeria			
Cameroon				North Macedonia			
Canada				Norway			
Central African Republic				Oman		X	
Chad		X		Pakistan			
Chile	X			Palau	mis.	mis.	mis.
China	mis.	mis.	mis.	Panama	X		
Colombia	X			Papua New Guinea			
Comoros		X		Paraguay	X		
Congo, Dem. Rep.				Peru	X		
Congo, Rep.				Philippines	X		
Costa Rica	X			Poland	X		
Cote d'Ivoire				Portugal	X		
Croatia	X			Puerto Rico	mis.	mis.	mis.
Cyprus				Qatar		X	
Czech Republic				Romania			
Denmark				Russian Federation			
Djibouti		X		Rwanda	X		
Dominica	mis.	mis.	mis.	Samoa	mis.	mis.	mis.
Dominican Republic	X			San Marino	mis.	mis.	mis.
Ecuador	X			Sao Tome and Principe	mis.	mis.	mis.
Egypt, Arab Rep.		X		Saudi Arabia		X	
El Salvador	X			Senegal		X	
Equatorial Guinea	mis.	mis.	mis.	Serbia			
Eritrea		X		Seychelles	mis.	mis.	mis.
Estonia				Sierra Leone		X	
Eswatini				Singapore			
Ethiopia				Slovak Republic	X		
Fiji				Slovenia	X		
Finland				Solomon Islands			
France	X			Somalia		X	
Gabon	X			South Africa			
Gambia, The		X		South Sudan	mis.	mis.	mis.
Georgia				Spain	X		
Germany	mis.	mis.	mis.	Sri Lanka			X
Ghana				St. Kitts and Nevis	mis.	mis.	mis.
Greece				St. Lucia	mis.	mis.	mis.
Grenada	mis.	mis.	mis.	St. Vincent and the Grenadines	mis.	mis.	mis.

Continued on next page

Table B.2 – continued from previous page

Country	Catholic	Muslim	Buddhist	Country	Catholic	Muslim	Buddhist
Guatemala	X			Sudan		X	
Guinea		X		Suriname	mis.	mis.	mis.
Guinea-Bissau				Sweden			
Guyana				Switzerland			
Haiti	X			Syrian Arab Republic		X	
Honduras	X			Taiwan, China			
Hong Kong SAR, China	mis.	mis.	mis.	Tajikistan		X	
Hungary	X			Tanzania			
Iceland	mis.	mis.	mis.	Thailand			X
India			X	Timor-Leste	mis.	mis.	mis.
Indonesia		X		Togo			
Iran, Islamic Rep.		X		Tonga	mis.	mis.	mis.
Iraq		X		Trinidad and Tobago			
Ireland	X			Tunisia		X	
Israel				Turkey		X	
Italy	X			Uganda			
Jamaica				Ukraine			
Japan			X	United Arab Emirates		X	
Jordan		X		United Kingdom			
Kazakhstan				United States			
Kenya				Uruguay	X		
Kiribati	mis.	mis.	mis.	Uzbekistan		X	
Korea, Rep.				Vanuatu	mis.	mis.	mis.
Kosovo	mis.	mis.	mis.	Venezuela, RB	X		
Kuwait		X		Vietnam	mis.	mis.	mis.
Kyrgyz Republic		X		West Bank and Gaza	mis.	mis.	mis.
Lao PDR			X	Yemen, Rep.	mis.	mis.	mis.
Latvia				Zambia			
Lebanon		X		Zimbabwe			

Notes: Religious majorities are shown for the year 2000. "X" denotes a majority in the respective religion. "mis." denotes missing data.

B.3. Robustness Checks: Regression Results

TABLE B.3. Economic Rights - Robustness Checks

	Dependent Variable: Economic Rights Index				
	(1)	(2)	(3)	(4)	(5)
A. Economic Variables					
GDP p.c. (in 1000s)	-0.02 (0.05)	-0.03 (0.06)	-0.02 (0.05)	-0.02 (0.05)	-0.09 (0.06)
Fertility rate, total (births per woman)	-6.55*** (0.67)	-6.57*** (0.70)	-6.35*** (0.66)	-6.52*** (0.61)	
Female LFP (15-64)	0.42*** (0.08)	0.44*** (0.08)	0.39*** (0.08)	0.41*** (0.07)	0.39*** (0.10)
OPEC			-7.14 (6.36)		
Secondary school enrollment					0.32*** (0.04)
B. Religion and Interactions with Religion					
Majority Catholic	0.08 (2.88)	0.25 (3.09)	-0.28 (2.84)	0.05 (2.89)	2.10 (3.36)
Majority Catholic=1 × GDP p.c. (in 1000s)	0.06 (0.09)	0.07 (0.10)	0.07 (0.09)	0.06 (0.09)	0.03 (0.11)
Majority Muslim=1	-3.91 (3.84)	-2.99 (3.79)	-4.43 (3.86)	-4.08 (3.64)	-6.30 (4.73)
Majority Muslim=1 × GDP p.c. (in 1000s)	-0.81*** (0.12)	-0.81*** (0.13)	-0.71*** (0.14)	-0.81*** (0.12)	-0.77*** (0.20)
Majority Buddhist=1	2.45 (4.96)	2.29 (5.72)	2.15 (4.84)	2.43 (4.89)	8.37 (5.92)
Majority Buddhist=1 × GDP p.c. (in 1000s)	-0.30 (0.19)	-0.26 (0.22)	-0.29 (0.18)	-0.28 (0.19)	-0.36 (0.31)
Observations	4903	4077	4903	4903	3447
Adjusted R^2	0.596	0.598	0.602	0.597	0.556

Summary of Changes: The sample is larger. The OPEC indicator is no longer significantly related to economic rights.

TABLE B.4. Political Rights - Robustness Checks

	Dependent Variable: Political Rights Index				
	(1)	(2)	(3)	(4)	(5)
A. Economic Variables					
GDP p.c. (in 1000s)	0.16* (0.08)	0.18* (0.09)	0.16* (0.08)	0.13 (0.08)	0.14* (0.08)
Fertility rate, total (births per woman)	-1.73** (0.72)	-1.79** (0.75)	-1.58** (0.74)	-2.61*** (0.63)	
Female LFP (15-64)	0.29*** (0.10)	0.30*** (0.10)	0.27*** (0.10)	0.36*** (0.08)	0.31*** (0.11)
OPEC			-4.84 (5.03)		
Secondary school enrollment					0.10** (0.04)
B. Religion and Interactions with Religion					
Majority Catholic	5.84** (2.92)	5.24* (2.95)	5.59* (2.94)	5.53* (2.99)	6.66* (3.38)
Majority Catholic=1 \times GDP p.c. (in 1000s)	-0.23* (0.13)	-0.23 (0.14)	-0.22* (0.13)	-0.21 (0.13)	-0.26** (0.13)
Majority Muslim=1	7.51* (3.92)	8.43** (4.22)	7.13* (4.04)	10.13*** (3.63)	9.09** (4.42)
Majority Muslim=1 \times GDP p.c. (in 1000s)	-1.15*** (0.22)	-1.19*** (0.22)	-1.08*** (0.20)	-1.13*** (0.22)	-1.28*** (0.15)
Majority Buddhist=1	-2.77 (4.92)	-0.61 (3.89)	-2.98 (4.96)	-3.35 (4.94)	-1.00 (4.40)
Majority Buddhist=1 \times GDP p.c. (in 1000s)	-0.50** (0.20)	-0.57*** (0.16)	-0.49** (0.20)	-0.50*** (0.19)	-0.50* (0.27)
Observations	4757	4077	4757	4757	3377
Adjusted R^2	0.335	0.343	0.338	0.267	0.358

Summary of Changes: The sample is larger, leading to small changes in coefficients after the decimal point.

TABLE B.5. Labor Rights - Robustness Checks

	Dependent Variable: Labor Rights Index				
	(1)	(2)	(3)	(4)	(5)
A. Economic Variables					
GDP p.c. (in 1000s)	0.58*** (0.10)	0.63*** (0.10)	0.58*** (0.10)	0.51*** (0.09)	0.55*** (0.11)
Fertility rate, total (births per woman)	-2.62*** (0.96)	-2.23** (1.03)	-2.55** (0.98)	-4.20*** (0.88)	
Female LFP (15-64)	0.29*** (0.10)	0.30*** (0.10)	0.28*** (0.10)	0.42*** (0.09)	0.33*** (0.10)
OPEC			-2.28 (6.17)		
Secondary school enrollment					0.12** (0.05)
B. Religion and Interactions with Religion					
Majority Catholic	11.38** (4.66)	11.12** (5.25)	11.26** (4.69)	10.88** (4.72)	10.09** (4.69)
Majority Catholic=1 \times GDP p.c. (in 1000s)	-0.30 (0.22)	-0.29 (0.27)	-0.29 (0.22)	-0.27 (0.23)	-0.24 (0.23)
Majority Muslim=1	-5.62 (4.76)	-4.42 (5.20)	-5.79 (4.80)	-1.03 (4.58)	-7.64 (5.10)
Majority Muslim=1 \times GDP p.c. (in 1000s)	-1.24*** (0.22)	-1.31*** (0.22)	-1.21*** (0.24)	-1.20*** (0.23)	-1.18*** (0.29)
Majority Buddhist=1	0.40 (5.29)	-0.16 (4.94)	0.31 (5.32)	-0.64 (5.19)	0.13 (5.09)
Majority Buddhist=1 \times GDP p.c. (in 1000s)	-0.77*** (0.21)	-0.69*** (0.19)	-0.77*** (0.21)	-0.79*** (0.22)	-0.32 (0.31)
Observations	4903	4077	4903	4903	3447
Adjusted R^2	0.467	0.457	0.467	0.397	0.501

Summary of Changes: The sample is larger, leading to small changes in coefficients after the decimal point.

TABLE B.6. Body Rights - Robustness Checks

	Dependent Variable: Body Rights Index				
	(1)	(2)	(3)	(4)	(5)
A. Economic Variables					
GDP p.c. (in 1000s)	0.33*** (0.10)	0.34*** (0.10)	0.34*** (0.10)	0.22** (0.10)	0.20** (0.09)
Fertility rate, total (births per woman)	-7.68*** (0.77)	-7.68*** (0.77)	-7.40*** (0.72)	-9.94*** (0.71)	
Female LFP (15-64)	0.16** (0.08)	0.17** (0.08)	0.12 (0.08)	0.36*** (0.07)	0.15 (0.10)
OPEC			-11.40 (7.56)		
Secondary school enrollment					0.40*** (0.05)
B. Religion and Interactions with Religion					
Majority Catholic	5.45 (3.70)	5.80 (3.68)	5.03 (3.54)	4.46 (4.02)	8.66** (3.80)
Majority Catholic=1 \times GDP p.c. (in 1000s)	-0.04 (0.15)	-0.05 (0.15)	-0.03 (0.15)	-0.00 (0.15)	-0.14 (0.19)
Majority Muslim=1	1.80 (3.92)	2.33 (3.87)	1.09 (3.86)	8.03** (3.67)	-0.56 (4.56)
Majority Muslim=1 \times GDP p.c. (in 1000s)	-0.75*** (0.12)	-0.77*** (0.12)	-0.61*** (0.18)	-0.67*** (0.12)	-0.49*** (0.13)
Majority Buddhist=1	-1.42 (6.72)	0.08 (6.24)	-1.79 (6.60)	-3.00 (7.40)	2.89 (6.66)
Majority Buddhist=1 \times GDP p.c. (in 1000s)	-0.25 (0.29)	-0.31 (0.26)	-0.24 (0.28)	-0.32 (0.33)	0.02 (0.36)
Observations	4121	4077	4121	4121	2948
Adjusted R^2	0.587	0.589	0.594	0.418	0.612

Summary of Changes: The sample is larger, leading to small changes in coefficients after the decimal point.

B.4. Additional Factors: Regression Results

TABLE B.7. Economic Rights - Additional Factors

	Dependent Variable: Economic Rights Index							
	(1)	(2)	(3)	(4)	(5)	(6)	(7)	(8)
A. Economic Variables								
GDP p.c. (in 1000s)	-0.02 (0.05)	-0.00 (0.06)	-0.00 (0.08)	-0.08 (0.09)	0.03 (0.10)	-0.04 (0.06)	-0.08 (0.05)	-0.04 (0.06)
Majority Catholic= $1 \times$ GDP p.c. (in 1000s)	0.06 (0.09)	0.04 (0.10)	0.07 (0.09)	0.10 (0.08)	0.04 (0.13)	0.11 (0.11)	0.07 (0.10)	0.07 (0.10)
Majority Muslim= $1 \times$ GDP p.c. (in 1000s)	-0.81*** (0.12)	-0.58* (0.32)	-0.83*** (0.12)	-0.85*** (0.15)	-1.04*** (0.25)	-0.87*** (0.21)	-0.69*** (0.12)	-0.78*** (0.12)
Majority Buddhist= $1 \times$ GDP p.c. (in 1000s)	-0.30 (0.19)	-0.32* (0.19)	-0.21 (0.19)	-0.24 (0.20)	-0.33 (0.23)	-0.25 (0.22)	-0.42** (0.21)	-0.25 (0.20)
Fertility rate, total (births per woman)	-6.55*** (0.67)	-6.32*** (0.71)	-7.70*** (1.18)	-7.19*** (0.81)	-6.15*** (0.66)	-6.29*** (0.71)	-5.54*** (0.70)	-6.49*** (0.66)
Female LFP (15-64)	0.42*** (0.08)	0.40*** (0.08)	0.43*** (0.09)	0.49*** (0.09)	0.35*** (0.08)	0.39*** (0.08)	0.40*** (0.07)	0.41*** (0.08)
B. Additional Factors								
Female population share		0.68 (0.78)						
Employment in agriculture			0.08 (0.10)					
Government Effectiveness (QoG data)				-0.04 (2.03)				
Women INGOs					-0.07 (0.32)			
Nb. of Conventions Ratified						1.32 (0.88)		
International pressure							9.74*** (2.63)	
Women in parliament >20%								2.53 (1.59)
Time FEs	Yes	Yes	Yes	Yes	Yes	Yes	Yes	Yes
Religion FEs	Yes	Yes	Yes	Yes	Yes	Yes	Yes	Yes
Observations	4903	4903	4240	3206	2554	3940	4223	4862
Adjusted R^2	0.596	0.598	0.612	0.614	0.574	0.598	0.609	0.597
Country FEs	No	No	No	No	No	No	No	No

Summary of Changes: The sample is larger, leading to small changes in coefficients after the decimal point. The coefficients for Number of Conventions Ratified and Women in Parliament are now insignificant.

TABLE B.8. Political Rights - Additional Factors

	Dependent Variable: Political Rights Index						
	(1)	(2)	(3)	(4)	(5)	(6)	(7)
A. Economic Variables							
GDP p.c. (in 1000s)	0.16* (0.08)	0.20** (0.08)	0.24*** (0.08)	0.12 (0.11)	0.07 (0.15)	0.14 (0.08)	0.16* (0.10)
Majority Catholic=1 × GDP p.c. (in 1000s)	-0.23* (0.13)	-0.26** (0.13)	-0.20 (0.14)	-0.19 (0.14)	-0.30 (0.18)	-0.25* (0.15)	-0.27* (0.16)
Majority Muslim=1 × GDP p.c. (in 1000s)	-1.15*** (0.22)	-0.70* (0.42)	-1.13*** (0.22)	-0.98*** (0.24)	-1.84*** (0.41)	-1.14*** (0.38)	-1.19*** (0.22)
Majority Buddhist=1 × GDP p.c. (in 1000s)	-0.50** (0.20)	-0.55*** (0.19)	-0.42* (0.21)	-0.64*** (0.21)	-0.41 (0.26)	-0.44** (0.21)	-0.47** (0.21)
Fertility rate, total (births per woman)	-1.73** (0.72)	-1.26* (0.71)	-3.20*** (1.13)	-1.45 (0.97)	-1.76** (0.69)	-1.53** (0.72)	-1.55** (0.70)
Female LFP (15-64)	0.29*** (0.10)	0.24*** (0.08)	0.23** (0.10)	0.29** (0.11)	0.27** (0.11)	0.28*** (0.10)	0.28*** (0.10)
B. Additional Factors							
Female population share		1.34 (1.09)					
Employment in agriculture			0.16* (0.08)				
Government Effectiveness (QoG data)				0.96 (1.94)			
Women INGOs					0.71 (0.43)		
Nb. of Conventions Ratified						3.56*** (0.95)	
International pressure							1.14 (2.57)
Time FEs	Yes	Yes	Yes	Yes	Yes	Yes	Yes
Religion FEs	Yes	Yes	Yes	Yes	Yes	Yes	Yes
Observations	4757	4757	4179	3068	2539	3893	4169
Adjusted R ²	0.335	0.346	0.337	0.280	0.323	0.322	0.325
Country FEs	No	No	No	No	No	No	No

Summary of Changes: The sample is larger, leading to small changes in coefficients after the decimal point. The coefficients for Membership in International Women INGOs and International Pressure are now insignificant.

TABLE B.9. Labor Rights - Additional Factors

	Dependent Variable: Labor Rights Index							
	(1)	(2)	(3)	(4)	(5)	(6)	(7)	(8)
A. Economic Variables								
GDP p.c. (in 1000s)	0.58*** (0.10)	0.62*** (0.10)	0.56*** (0.11)	0.27** (0.13)	0.88*** (0.16)	0.67*** (0.11)	0.66*** (0.11)	0.52*** (0.10)
Majority Catholic=1 × GDP p.c. (in 1000s)	-0.30 (0.22)	-0.33 (0.22)	-0.26 (0.21)	-0.14 (0.17)	-0.58 (0.40)	-0.27 (0.29)	-0.37 (0.28)	-0.25 (0.23)
Majority Muslim=1 × GDP p.c. (in 1000s)	-1.24*** (0.22)	-0.82** (0.34)	-1.25*** (0.25)	-1.08*** (0.28)	-1.46*** (0.46)	-1.33*** (0.37)	-1.29*** (0.23)	-1.16*** (0.22)
Majority Buddhist=1 × GDP p.c. (in 1000s)	-0.77*** (0.21)	-0.82*** (0.21)	-0.78*** (0.23)	-0.81*** (0.23)	-0.88*** (0.23)	-0.79*** (0.22)	-0.83*** (0.21)	-0.64*** (0.23)
Fertility rate, total (births per woman)	-2.62*** (0.96)	-2.18** (1.02)	-2.58* (1.42)	-2.21* (1.26)	-1.38 (0.91)	-2.12** (0.96)	-2.01** (0.98)	-2.39** (0.93)
Female LFP (15-64)	0.29*** (0.10)	0.25** (0.10)	0.29** (0.12)	0.37*** (0.11)	0.18* (0.10)	0.24** (0.10)	0.26*** (0.10)	0.25*** (0.09)
B. Additional Factors								
Female population share		1.24* (0.74)						
Employment in agriculture			0.01 (0.11)					
Government Effectiveness (QoG data)				3.77 (2.81)				
Women INGOs					0.52 (0.47)			
Nb. of Conventions Ratified						0.88 (1.25)		
International pressure							3.50 (3.87)	
Women in parliament >20%								7.85** (3.09)
Time FEs	Yes	Yes	Yes	Yes	Yes	Yes	Yes	Yes
Religion FEs	Yes	Yes	Yes	Yes	Yes	Yes	Yes	Yes
Observations	4903	4903	4240	3206	2554	3940	4223	4862
Adjusted R^2	0.467	0.471	0.454	0.449	0.422	0.442	0.456	0.481
Country FEs	No	No	No	No	No	No	No	No

Summary of Changes: The sample is larger, leading to small changes in coefficients after the decimal point. The coefficient on female population share is now positive and significant. The coefficient on International Pressure is now insignificant.

TABLE B.10. Body Rights - Additional Factors

	Dependent Variable: Body Rights Index							
	(1)	(2)	(3)	(4)	(5)	(6)	(7)	(8)
A. Economic Variables								
GDP p.c. (in 1000s)	0.33*** (0.10)	0.36*** (0.11)	0.30*** (0.11)	-0.15 (0.13)	0.16 (0.16)	0.32*** (0.12)	0.30*** (0.11)	0.30*** (0.11)
Majority Catholic=1 × GDP p.c. (in 1000s)	-0.04 (0.15)	-0.06 (0.16)	-0.01 (0.15)	-0.09 (0.12)	0.03 (0.25)	0.06 (0.17)	-0.03 (0.17)	-0.02 (0.16)
Majority Muslim=1 × GDP p.c. (in 1000s)	-0.75*** (0.12)	-0.49** (0.24)	-0.79*** (0.12)	-0.66*** (0.15)	-0.17 (0.24)	-0.67*** (0.17)	-0.68*** (0.13)	-0.70*** (0.13)
Majority Buddhist=1 × GDP p.c. (in 1000s)	-0.25 (0.29)	-0.28 (0.29)	-0.37 (0.30)	-0.63** (0.25)	-0.16 (0.22)	-0.33 (0.24)	-0.29 (0.28)	-0.22 (0.27)
Fertility rate, total (births per woman)	-7.68*** (0.77)	-7.40*** (0.81)	-7.91*** (1.29)	-5.89*** (1.15)	-6.89*** (0.69)	-7.11*** (0.76)	-7.07*** (0.75)	-7.58*** (0.77)
Female LFP (15-64)	0.16** (0.08)	0.14 (0.08)	0.21* (0.11)	0.21** (0.10)	0.11 (0.08)	0.11 (0.08)	0.14* (0.08)	0.14* (0.08)
B. Additional Factors								
Female population share		0.80 (0.67)						
Employment in agriculture			-0.03 (0.11)					
Government Effectiveness (QoG data)				11.81*** (2.99)				
Women INGOs					1.16** (0.47)			
Nb. of Conventions Ratified						3.24** (1.29)		
International pressure							6.38* (3.79)	
Women in parliament >20%								4.71* (2.64)
Time FEs	Yes	Yes	Yes	Yes	Yes	Yes	Yes	Yes
Religion FEs	Yes	Yes	Yes	Yes	Yes	Yes	Yes	Yes
Observations	4121	4121	3615	2630	2258	3568	3825	4084
Adjusted R ²	0.587	0.588	0.577	0.561	0.522	0.591	0.578	0.594
Country FEs	No	No	No	No	No	No	No	No

Summary of Changes: The sample is larger, leading to small changes in coefficients after the decimal point. The coefficients on Membership in International Women INGOs, International Pressure, and Women in Parliament are now significant.